

YMCA OSCAR Newsletter May 09

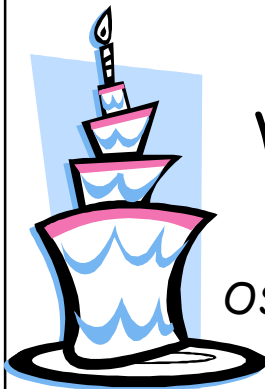


OSCAR Price Increase

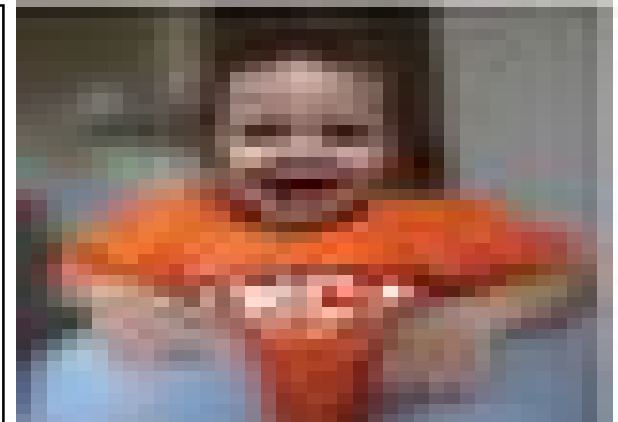
On July 20 2009 we will be increasing our charges to **\$11.75 per day**. This increase will assist with the daily expenditure that has been increasing over the past 2 years in that we have not lifted our rate to include it until now. This will not affect those who are subsidized as it is still below the rate that winz pay, we will inform winz of the change Those that are on the YMCA subsidy your charge will remain the same. We have tried to keep this affordable for all for any queries I am available at the YMCA on 8679259 or ask for me at reception. Alexia, Programme Manager

YMCA Open Day

Its our 165th birthday!
Come and celebrate with us



Saturday June 06
10 am till 2 pm
Win a bike & other prizes—Free day
OSCAR children will be doing a dance



YMCA T-Shirts

We are providing you the opportunity to purchase this t-shirt at a cost of \$10 for children who attend 5 days a week and \$20 for anyone else. We have them in sizes 5 to 16 with orange or blue colours. You need to hurry as stock is limited. Please make your purchase at reception or we can charge it on your account

YMCA Active Learning Centre

The Gisborne YMCA is starting a Learning Centre in its Kaiti premises with a goal of providing a centre for children who want that extra help in learning. The centre will operate Monday to Friday from 3 pm to 5:30 pm with the children being collected from school and provided with a nutritional meal. The Learning will be based on literacy, numeracy and perception motor skills with a qualified teacher and teachers in training. There are limited spaces available and you can only enroll your child for 3 days per week. The cost is \$15 per child per day, if you qualify for WINZ subsidy we can assist you to apply. We anticipate the programme to start in June 09. Please register your interest at the Gisborne YMCA reception or email alexiah@ymcagisborne.org.nz



Have your say.....

Every term we provide you with a survey to monitor our progress and to help us understand what your feelings are for our programme?

Please complete a survey form and place it in the box at reception. This is an opportunity for you to let us know what you would like to see in the programme or to tell us what is not working.



Y-OSCAR
Out of School Care And Recreation